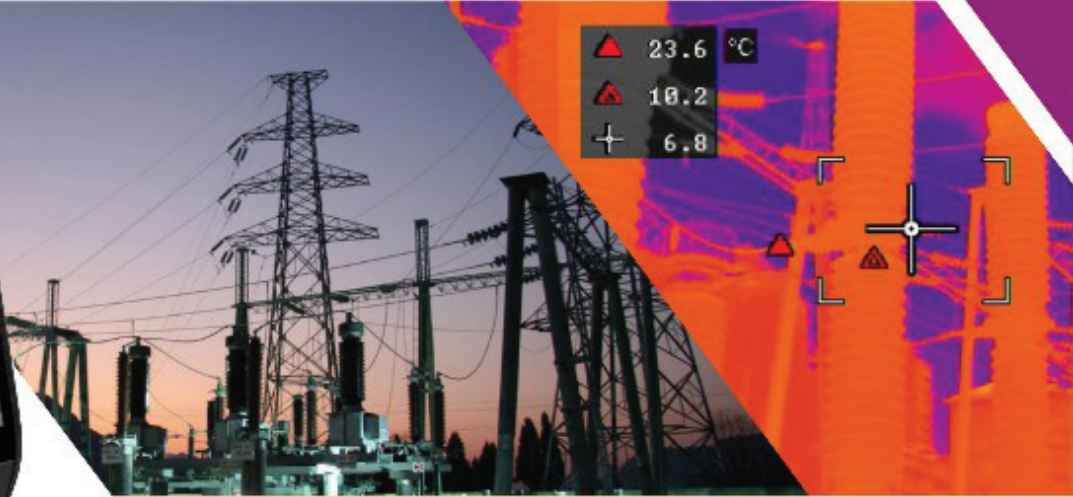


D Series

Intelligent Thermographic IR Camera



As Guide Infrared's newly launched thermographic IR camera, D series continues Guide's tradition of offering both high-quality and innovative features. D series' highlights lies in its rugged and ergonomic design. More than that, its brief operation interface and intelligent button navigation would make the first time user feel as an expert. D series are equipped with optional lens set for different FOV requirements in different occasions. With built-in illuminator, you can easily take visible photos and compare them with IR photos, which help you find problems more easily.

Features and Benefits

- **4" high light touch screen**
Adjustable brightness. Still clear under sunshine. All operation can be completed on the touch screen
- **Optional Lens set**
You can choose the proper lens for different occasions
- **Built-in Illuminator**
Take visible photos in the low lighting environment
- **Different image type**
IR, visible, MIF, PIP
- **Removable SD card**
Up to 32G storage capacity for photos and videos compression storage
- **Wi-Fi share**
Share IR images and findings immediately
- **Connected with mobile terminal**
Connected with mobile terminal to take IR photo, to achieve multi screen control

Applications

- Electrical equipment inspection
- Mechanical maintenance
- Building diagnostic
- Medical diagnosis
- Telecom equipment inspection
- Chemical industry equipment inspection



Specifications

	D192M	D384M	D384A
Imaging Performance			
IR resolution	192×144	384×288	384×288
Field of view(FOV)	37.8"×28.8"	28.4"×21.5"	35"×27"
Min focusing range	0.5m	0.5m	0.4m
Focal length	7mm	19mm	15mm
IFOV	3.45mrad	1.29mrad	1.60mrad
Lens identification	Automatic/ Manual		N/A
F#	F1.1	F1.0	F1.1
Frame rate	25HZ		
Focus	Manual	Electric/ Automatic	
Digital zoom	1.1~4		
Detector			
Detector type/Spectral range	Vox / 8~14μm		
Pixel size	25μm		
Image Presentation			
Display	4" highlight LED touch screen		
Image modes	IR image/ Visual image MIF/ PIP		
Measurement			
Temperature range	-20°C~150°C, 100°C~650°C		
Accuracy	±2°C or ±2% of reading for ambient temperature 15°C to 35°C and object temperature above 0°C		
Spotmeter	5		
Line	2		
Area	5		
Auto tracking	1. Max/ Min temp spot of full screen ; 2. Max/ Min temp spot of analysis object		
Isotherm	Above, Below, Interval		
Max temp. alarm	Yes		
Min temp. alarm	Yes		
Color Palettes	8 (White Hot, Fulgurite, Iron Red, Hot Iron, Medical, Arctic, Rainbow 1, Rainbow 2)		
Image storage			
Storage Medium	In camera and TF card		
Image format	JPG with temp info		
Interfaces			
Data communication interface	USB, HDMI, Power, TF card		
WIFI	Yes		
USB	MICRO USB 2.0		
HDMI	MICRO HDMI		
TF card	Standard 16G, up to 32G		
Power system			
Battery type/Operating time	Rechargeable LI-ion battery , ≥4h		
Environmental Parameters			
Operating temperature range	-10°C~50°C		
Storage temperature range	-40°C~70°C		
Encapsulation	IP54		
Shock	30g 11ms (IEC 60068-2-27)		
Vibration	10HZ~150HZ~10HZ 0.15mm (IEC 60068-2-6)		
Certification	CE, FCC, ROHS		
Weight	840g	840g	735g
Dimensions	274mm×106mm×78mm	274mm×110mm×78mm	274mm×91mm×78mm

WUHAN GUIDE INFRARED CO.,LTD

No.6 Huanglongshan South Rd,Wuhan,Hubei,P.R.China.430205
 T : +86 27 8129 8338 / 8340
 E : enquiry@guide-infrared.com

EUNIR SYSTEMS NV

Kapelstraat 60,3001 Heverlee, Belgium
 T : +32 16 286 498
 F : +32 16 286 319
 E : info@eunir.com

<http://www.guideir.com>

(Copyright©2016 Wuhan Guide Infrared Co., Ltd. All rights reserved.)