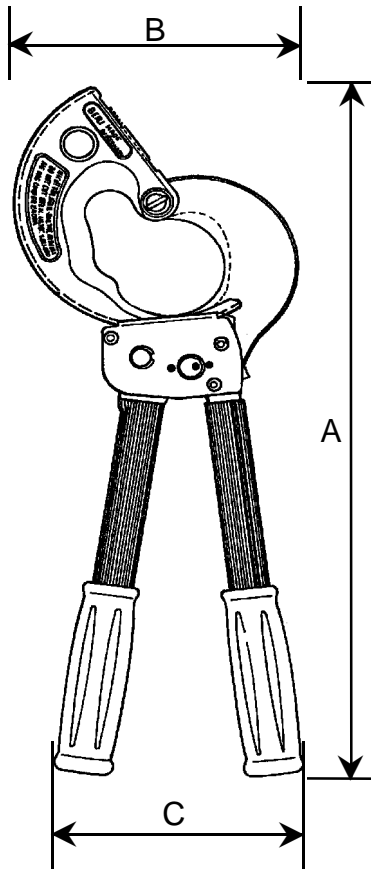


'KS-62'

750 sqmm / 62 mmØ

CABLE CUTTER



MAIN DATA

Measures (apprx.):

Length A: 410 mm
 Width B: 160 mm
 Width C: 130 mm
 CableØ D: 62 mm

Weight: 2.0 kg

Grips:

Polypropylen (PP), black

Tube cover:

PVC-tube, different colors
 (cadmiu-free)

Surfaces:

mainly blackened

Other material:

all moving parts made from
 high grade steels, specially heat
 treated.

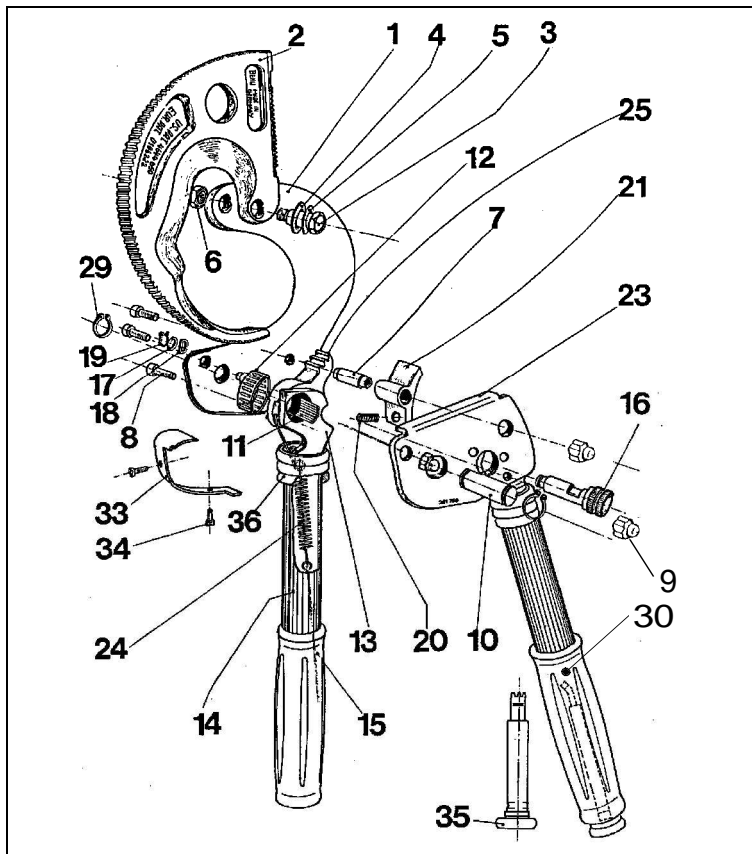
SPAREPARTS

The parts shown in the exploded drawing and the list are easily changeable if the guides in our leaflet 'Info KS-62' are being observed. This will be mailed at your request.

Further our Service will be happy to help you in case of repairs or sparepart needs.

BEKU-APPARATEBAU
 Quitzowstraße 24-26
 10559 Berlin

Tel: +49-30-396 06 90
 Fax: +49-30-396 50 97



Part No.	ea. per cutter	Description	Order No.
1	1	Fixed Blade	62.101
2	1	Moveable Blade	62.102
3	1	Pinscrew	62.103
4	1	Plate Spring	62.104
5	1	Adjustment Washer	62.105
6	1	Headed Nut	62.106
7	2	Distance Case	62.107
8	3	Assembling Screw	62.108
9	3	Headed Nut for P/N 8	62.109
10	1	Bolt	62.110
11	21	Bearing Needles	62.111
12	1	Needle Bearing	62.112
13	1	Moveable Handle	62.113
14	1	PVC-Tube	62.114
15	1	Grip	62.115
16	1	Locking Axle	62.116
17	1	Washer	62.117
18	1	Spring Washer	62.118
19	1	Circlip	62.119
20	1	Spring	62.120
21	1	Holding Ratchet	62.121
23	1	Cover Palte, c/w Tube	62.123
24	1	Tension Spring, c/w wire bow	62.124
25	1	Ratchet	62.125
29	2	Circlip for P/N 10	62.129
30	1	Grip with tooth comb holder	62.130
33	1	Cover Plate	62.133
34	2	Holding Screw for P/N 33	62.134
35	1	tooth Comb	62.135
36	2	Rubber Ring	62.136