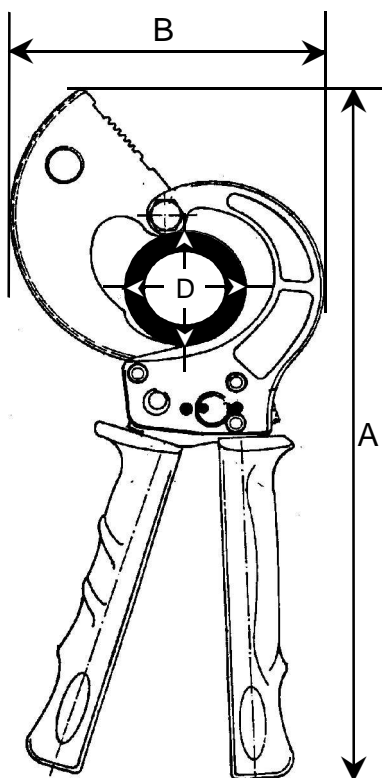


'DT-75'

300 sqmm / 75 mmØ

CABLE CUTTER



MAIN DATA

Measures (apprx.):

Length A: 370 mm
Width B: 175 mm

CableØ D: 75 mm

Weight: 1.5 kg

Gripps:

Polypropylen (PP), sev.
cadmium-free colors

Surfaces:

mainly blackened

Other material:

all moving parts made from
high grade steels, specially heat
treated.

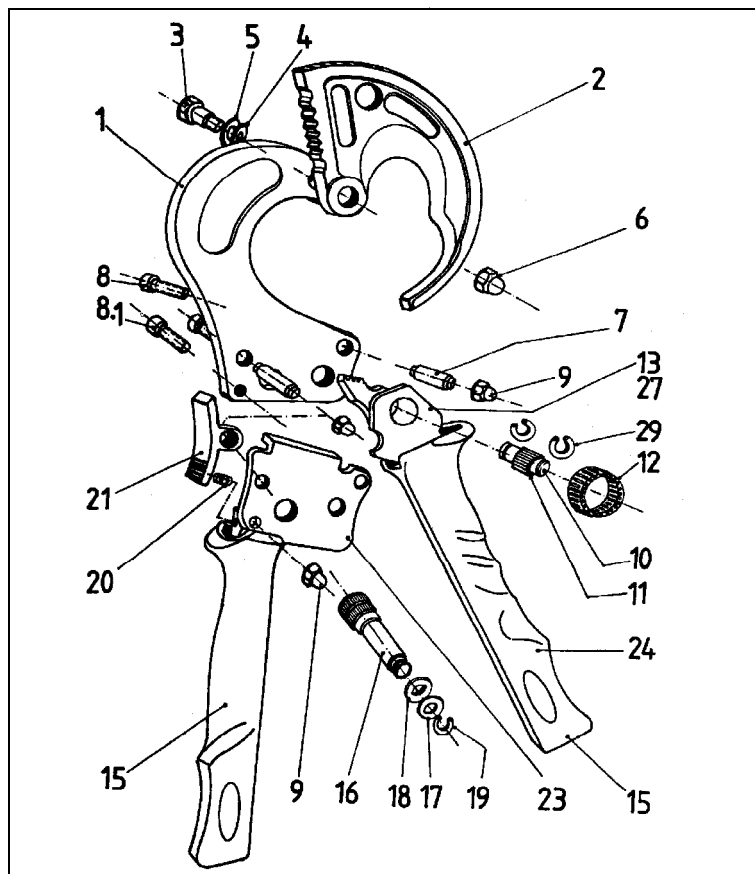
SPAREPARTS

The parts shown in the exploded drawing and the list are easily changeable if the guides in our leaflet 'Info DT-75' are being observed. This will be mailed at your request.

Further our Service will be happy to help you in case of repairs or sparepart needs.

BEKU-APPARATEBAU
Quitzwstraße 24-26
10559 Berlin

Tel: +49-30-396 06 90
Fax: +49-30-396 50 97



Part No.	each per cutter	Description	Order No.
1	1	Fixed Blade	75.001
2	1	Moveable Blade	75.002
3	1	Pinscrew	75.003
4	1	Platespring	75.004
5	1	Adjustment Washer	75.005
6	1	Headed Nut	75.006
7	2	Distance Case	75.007
8	3	Assembling Screw	75.008
9	3	Headed Nut	75.009
10	1	Bolt	75.010
11	19	Bearing Needles	75.011
12	1	Meedle Bearing	75.012
13	1	Moveable Handle	75.013
14	1	Grip, fixed handle	75.015
15	1	Grip, moveable handle	75.016
16	1	Locking Axle	75.017
17	1	Washer	75.018
18	1	Plarespring	75.019
19	1	Circlip	75.020
20	1	Spring	75.021
21	1	Holding Ratchet	75.021
23	1	Cover Plate, complete w/ Handle Tube	75.023
24	1	Tension Spring, complete w/ Wire Bow	75.024
25	1	Ratchet	75.025
29	2	Circlip for Part 10	75.029